

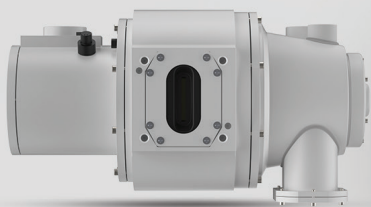


ROSATOM
RDS

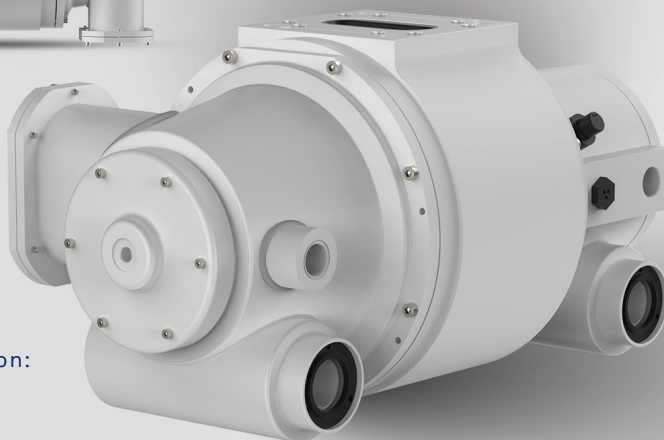
Used as a disposable part of diagnostic systems, for example, TeleCoRD-MT-Plus – an expert class remote-controlled device with the possibility of radiography, fluoroscopy, and focal plane tomography

X - R A Y E M I T T E R

with high-speed rotating anode



Download the leaflet



Scope of application:

Radiology

- + Focal Spots 0.6/1.2mm
- + Anode Material – W(Re) – TZM
- + Anode tilt angle and diameter: 15°-73 mm
- + Maximum nominal anode dissipation power: 750 W (60,000 HU/min)

- + Anode heat storage capacity: 225 kJ (300 kHU)
- + Maximum peak voltage: 150 kV
- + Anode rotation speed: 3000 – 10000 rpm

+7 (929) 591-87-70

smt@rosatom.ru

rosatom-rds.ru